

Fall/Winter 13 Collection

*Fresh and fabulous styles and
prints for Fall and Winter!*



WELCOME TO OUR
Fall/Winter 2013
COLLECTION

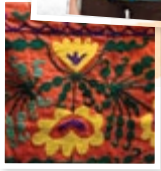
Our new collection includes a harvest of wonderful seasonal prints, new styles, accessories and more! You'll love the many fresh and fashionable looks for fall!

INDEX TO CATALOG

| | |
|-------------------|----------------------|
| koi fashion | pg 4-37 |
| koi solids | pg 38-59 |
| Ecko scrubs | pg 60-73 |
| koi shoes | pg 74 |
| koi accessories | pg 75 |
| Lab coats | pg 19, 32, 54, 56-57 |
| Men's scrubs | pg 58-59, 70-73 |
| koi solids chart | pg 76-77 |
| Ecko solids chart | pg 78 |
| koi size chart | pg 79 |
| Ecko size chart | pg 78 |
| Index | pg 80-81 |
| Winter/Holiday | pg 15, 31-37 |
| Halloween | pg 28-29 |
| Guarantee | pg 79 |



New Color
Raspberry!



Follow me on
Instagram at:
[koikathypeterson](#)



Kathy's Inspiration For Fall

Our Fall and Winter collections were inspired by my first trip to Istanbul. While traveling through Europe, I had seen a big trend toward vintage Asian floral and geometric patterns. So Turkey was the perfect place to begin my inspiration search due to the strong eastern and western influences of their culture. I was not disappointed.

While in Istanbul, I visited the beautiful Blue Mosque. It was truly breathtaking and it became the source of inspiration for our ceil blue and navy collection including our Bella Francoise, Julia Silver Garden and Stella navy tops.

We had a lot of fun visiting the Grand Bazaar in Istanbul. There was so much to look at. The beautiful tiles and pillows inspired the Kathryn Twiggy and Bridgette Flower Power tops. One of my favorite places to visit was the spice bazaar. The curries, saffron and other spices inspired our sunset and black color grouping. The pomegranate Turkish delight was incredible and a nice way to end our trip.

I hope you enjoy our new collection.

To read more about
my trip to Istanbul visit
www.koihappiness.com/Istanbul

Warmest regards,

Kathy

Kathy Peterson
Founder and President

About Kathy

When Kathy Peterson first began designing scrubs, she noticed that many manufacturers viewed design as an afterthought. Scrubs were more about function than fashion. As a former designer for companies ranging from Guess to Carole Little, Kathy believed that healthcare professionals would welcome a more fashionable approach to scrubs. After a successful stint as Director of Design for a leading scrubs manufacturer, Kathy followed her heart and founded koi. Kathy grew up in Hawaii and currently resides in Los Angeles.

On the cover: **KATHRYN TOP**, 115PR-KOL, Koi Lucky, Featured on page 22



"I tried your scrubs on and now I am hooked...never did I ever imagine I could look this good as a nurse in my koi scrubs!! -Sher D., Ridgecrest, CA"



Angelic

Kathy's Design Notes:

Our new raspberry color was inspired by my trip to Jaipur, India. I came across rose petals floating in water and I fell in love with the color. This color works well on almost every skin tone.

BRIDGETTE PLACEMENT TOP

129PLM-ANG

Angelic

XS-3X

Center Back Length Size: 26 3/4"

Lightweight with novelty front tie, two pockets, tunic length. 100% cotton. Imported.

Coordinating Colors

 Pink (16)

 Merlot (48)

 Raspberry (73)



Front



Back

Pants are featured on pages 46-49

fall '13 Raspberry & Merlot

...a delectable combination.



Spot On

DIANA TOP

196PR-SPN

Spot On

XS-3X

Center Back Length Size S: 26 3/4"

Lightweight, feminine top with keyhole neckline, merrow stitching, smocked pockets. 100% cotton. Imported.

Coordinating Colors

 Merlot (48)

 Raspberry (73)



Front



Back

Pants are featured on pages 46-49

A whole new take on
*Raspberry,
Merlot &
Black!*






In
Check

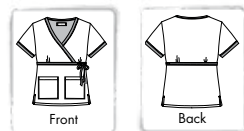
KATHRYN TOP
115PR-INC

In Check
XS-3X
Center Back Length Size S: 25"

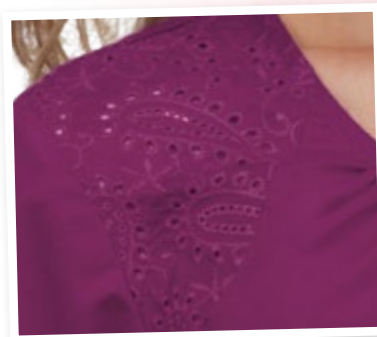
Mock wrap top with adjustable front ties, flattering for all shapes and sizes. 100% cotton. Imported.

Coordinating Colors

-  Black (02)
-  Merlot (48)
-  Raspberry (73)



fall '13
Love at first sight!
A great new top, a delicious new color!



↗ paisley eyelet on
shoulders and pockets!

New Body Style
ROXANNE TOP
205-73

Raspberry
XS-3X
Center Back Length Size S: 25 1/2"


Fashion solid top with keyhole neckline and contrast trim in tonal eyelet fabric at shoulder and pockets. 100% cotton. Imported.

other colors available

-  Black (02)
-  Navy (12)



Raspberry

 "I really like the way these scrubs look and fit. I get compliments all the time when I wear them."
 —Patricia W., Middlesex, NC

fall '13
Fashion Takes flight
 With this beautiful butterfly print top!

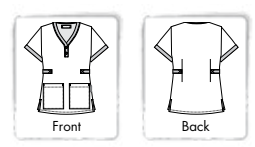
Carnaby Street



KOURTNEY TOP
176PR-CNS
 Carnaby Street
 XS-3X
 Center Back Length Size S: 25 1/4"

Sporty top with box-stitched side-contrast waist tabs, two patch pockets. 100% cotton. Imported.

- Coordinating Colors*
-  Black (02)
 -  Sunset (71)
 -  Raspberry (73)



Pants are featured on pages 46-49

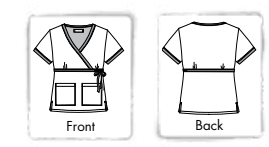
Night Flight



KATHRYN TOP
115PR-NFL
 Night Flight
 XS-3X
 Center Back Length Size S: 25"

Mock wrap top with adjustable front ties, flattering for all shapes and sizes. 100% cotton. Imported.

- Coordinating Colors*
-  Camel (07)
 -  Merlot (48)
 -  Espresso (52)
 -  Raspberry (73)



Pants are featured on pages 46-49

*Just wild
about Navy*

KATHRYN TOP

115PR-CHH


Cha Cha Cheetah

XS-3X

Center Back Length Size S: 25"

Mock wrap top with adjustable front ties, flattering for all shapes and sizes. 100% cotton. Imported.

Coordinating Colors

 Navy (12)

 Ceil (25)



Front



Back



see more I.D.
badges on pg. 75

Cha Cha
Cheetah

fall '13

*Beautiful
in Blue*

Francoise

BELLA TOP

149PR-FRA


Francoise

XS-3X

Center Back Length Size S: 25 1/2"

Feminine top, soft and silky to the touch, patch pockets, elastic back and neck. 100% cotton sateen. Imported.

Coordinating Colors

 Navy (12)

 Ceil (25)

 Stone (36)



Front



Back



"I only wear koi scrubs. I love them. ALL of them."
—Gay Lynn S., Smithton, MO

Silver
Garden



JULIA TOP 197PR-SIG

Silver Garden
XS-3X
Center Back Length Size S: 26 1/2"

Mock wrap top with cover stitching throughout, patch pockets, and elastic back waist. 60% cotton, 40% polyester soft poplin. Imported.

Coordinating Colors

-  Navy (12)
-  Ceil (25)
-  Galaxy (60)



Front



Back

Pants are featured on pages 46-49

fall '13 Navy style!

paisley eyelet
on shoulders



New Body Style ROXANNE TOP 205-12

Navy
XS-3X
Center Back Length Size S: 25 1/2"

Fashion solid top with keyhole neckline and contrast trim in tonal eyelet fabric at shoulder and pockets. 100% cotton. Imported.

other colors available

-  Black (02)
-  Raspberry (73)



Front



Back

Pants are featured on pages 46-49

Navy



paisley eyelet
on pockets too!

fall '13
Wrap yourself
in style

Be warm and fashionable
all season long!



flattering set in back
shows when tied in front

GABRIELLE SWEATER

418PR-JAB

Jaguar-Black

XS-3X

Center Back Length Size S: 28"

Fashion-forward crossover
wrap sweater with belt/tie at
waist, long sleeves and patch
pockets. 96% polyester, 4%
spandex. Imported.

Coordinating Colors

White (01)

Black (02)



Pants are featured on pages 46-49

winter '13 AVAILABLE 9/1/13

A Gem of a top!



Gems
& Jewels

New Body Style

BETHANY PLACEMENT TOP

211PLM-GMJ

Gems & Jewels

XS-XL

Center Back Length Size S: 26 1/4"

Scoop neck top, raglan sleeves
with pleated detailing, welt pockets
and button details. 100% cotton.
Imported.

Coordinating Colors

White (01)

Black (02)

Steel (24)



Pants are featured on pages 46-49



Express Yourself in Espresso & Turquoise



Twiggy

KATHRYN TOP 115PR-TWG

Twiggy
XS-3X
Center Back Length Size S: 25"

Mock wrap top with adjustable front ties, flattering for all shapes and sizes. 100% cotton. Imported.

Coordinating Colors

Espresso (52) Olive (57)
Ice Blue (56) Turquoise (59)



Wired

CHRISTINA TOP 207PR-WIR

Wired
XS-3X
Center Back Length Size S: 25 1/4"

Sporty yet feminine top with Henley neckline, patch pockets, shaping at waist. 100% cotton. Imported.

Coordinating Colors

Espresso (52) Ice Blue (56) Turquoise (59)



fall '13 Flower Power!



Flower
Power Cool

BRIDGETTE TOP 129PR-FPC

Flower Power-Cool
XS-3X
Center Back Length Size S: 26 3/4"

Lightweight with novelty front tie, two pockets, tunic length. 100% cotton. Imported.

Coordinating Colors

Espresso (52) Turquoise (59)





Together, let's make a difference in the fight against breast cancer.

koi is donating \$2 from the sale of each item in the **Courage Collection** to The Breast Cancer Research Foundation®, for a minimum donation of \$15,000. For more information about BCRF, visit www.bcrfcure.org.

BRIANNA PLACEMENT TOP 190PRM-CRG

Courage
XS-XL
Center Back Length Size S: 26 3/4"

Lightweight top with flower button at neckline, two pockets, elastic back. 100% cotton. Imported.

Coordinating Colors

Pink (16) Flamingo (58)



Courage



Compassion

KATHRYN TOP 115PRM-CPS

Compassion
XS-3X
Center Back Length Size S: 25"

Mock wrap top with adjustable front ties, flattering for all shapes and sizes. 100% cotton. Imported.

Coordinating Colors

Black (02) Pink (16) Flamingo (58)



fall '13
koi™ cares
COURAGE
— COLLECTION —

Benefitting

The
Breast
Cancer

Research
Foundation.



Kathy's Design Notes:

I really wanted to create something special for our new partnership with the Breast Cancer Research Foundation. **91% of every dollar they spend goes to breast cancer research and awareness programs.** Please join us in supporting this worthwhile cause.

OLIVIA JACKET 406PRM-16

Pink (Limited Edition)
XS-3X
Center Back Length Size S: 27 3/8"

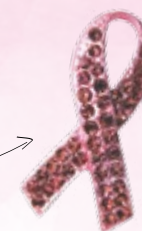
Sleek, stylish jacket with round neck, button front and deep pockets. 55% cotton, 45% polyester soft twill. Imported.

Coordinating Colors

Pink (16)



Includes removable pink ribbon pin.



Pink

A sweet take on *Denim*



Navy

Kathy's Design Notes:

I've always loved the look of denim. We tried to capture that look in our new Stella top. Every garment is unique in look due to a special finish.

New Body Style
STELLA TOP
194-12

Navy
XS-3X
Center Back Length Size S: 23 3/4"

Soft, lightweight top with novelty washed denim-like fabrication, tie-front and patch pockets. 100% cotton. Imported.

Coordinating Colors

- White (01)
- Navy (12)



fall '13
Fresh & Fabulous!

Great tops that capture the look of denim with a koi twist!

AMELIA TOP
202PR-MEM

Memoirs
XS-3X
Center Back Length Size S: 27"

Feminine mock wrap top with ruffled neckline and sleeves, gathered patch pockets. 100% cotton. Imported.

Coordinating Colors

- Navy (12)
- Ice Blue (56)
- Flamingo (58)



Memoirs



Sweet Home

BRIANNA PLACEMENT TOP
190PLM-SHO

Sweet Home
XS-XL
Center Back Length Size S: 26 3/4"

Lightweight top with jewel rhinestone button at neckline, two pockets, elastic back. 100% cotton. Imported.

Coordinating Colors

- Navy (12)
- Flamingo (58)



Lucky You! Orange is in this fall!



Koi
Lucky



Warm
Breeze

KATHRYN TOP
115PR-KOL

Koi Lucky
XS-3X
Center Back Length Size S: 25"

Mock wrap top with adjustable front ties, flattering for all shapes and sizes. 100% cotton. Imported.

Coordinating Colors

Black (02)
Sunset (71)



BRIANNA PLACEMENT TOP
190PLM-WBR

Warm Breeze
XS-XL
Center Back Length Size S: 26 3/4"

Lightweight top with flower button at neckline, two pockets, elastic back. 100% cotton. Imported.

Coordinating Colors

Black (02) Sunset (71)
Stone (36)



fall '13
Take a walk on the
Wild Side!

*Be bold & beautiful in this
stylish animal print top.*

KATHRYN TOP
115PR-WSB

Wildside Black
XS-3X
Center Back Length Size S: 25"

Mock wrap top with adjustable front ties, flattering for all shapes and sizes. 100% cotton. Imported.

Coordinating Colors

Black (02)
Stone (36)
Sunset (71)



Wildside
Black



"Love your scrubs, they're so comfortable and stylish! ☺" -Karen W., Turtletown, TN

Butterfly Gardens



KATHRYN TOP

115PR-BUG

Butterfly Gardens


XS-3X


Center Back Length Size S: 25"

Mock wrap top with adjustable front ties, flattering for all shapes and sizes. 100% cotton. Imported.

Coordinating Colors

 Camel (07)

 Espresso (52)

 Sugar Plum (72)



Front



Back

Pants are featured on pages 46-49

fall '13

To your Espresso!

Parisian Floral



BRIANNA PLACEMENT TOP

190PLM-PAF

Parisian Floral


XS-XL


Center Back Length Size S: 26 3/4"

Lightweight top with flower button at neckline, two pockets, elastic back. 100% cotton. Imported.

Coordinating Colors

 Camel (07)

 Espresso (52)

 Sugar Plum (72)




Front



Back

Pants are featured on pages 46-49


 "Three years ago, I purchased my first koi uniform and that uniform still looks like new. They are the best uniforms I have ever bought." —Deb W., Lamar, CO

Aura



BRIDGETTE TOP
129PR-AUR
 Aura
 XS–3X
 Center Back Length Size S: 26 3/4"

Lightweight with novelty front tie, two pockets, tunic length. 100% cotton. Imported.

- Coordinating Colors
-  White (01)
 -  Espresso (52)
 -  Sugar Plum (72)



Pants are featured on pages 46-49

fall '13
Simply Stated.

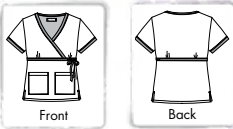
Moroccan Tile



KATHRYN TOP
115PR-MCC
 Moroccan Tile
 XS–3X
 Center Back Length Size S: 25"

Mock wrap top with adjustable front ties, flattering for all shapes and sizes. 100% cotton. Imported.

- Coordinating Colors
-  White (01)
 -  Espresso (52)
 -  Sugar Plum (72)



Pants are featured on pages 46-49

tokidoki by koi. 

Halloween!

Who wouldn't love a holiday all about dressing up and eating candy?

What is tokidoki? tokidoki is the vision of designer Simone Legno and his partners Pooneh Mohajer and Ivan Arnold. The brand has built a worldwide following with its larger-than-life characters and designs, as well as its high-profile collaborations with Karl Lagerfeld, LeSportsac, Hello Kitty, Marvel and others.



CHRISTINA TOP

207PR-CNY
Candy! Candy!
XS-3X
Center Back Length Size S: 25 1/4"

Candy!
Candy!

Sporty yet feminine top with Henley neckline, patch pockets, shaping at waist. 100% cotton. Imported.

Coordinating Colors

 White (01)  Black (02)



Front



Back



see more I.D. badges
on pg. 75



fall '13

Scary Cute!



BRIANNA PLACEMENT TOP

190PLM-IBS
Itsy Bitsy Spider
XS-XL
Center Back Length Size S: 26 3/4"

Itsy Bitsy
Spider

Lightweight top with jewel rhinestone button at neckline, two pockets, elastic back. 100% cotton. Imported.

Coordinating Colors

 White (01)

 Black (02)




Front



Back



Pants are featured on pages 46-49

 For customer service, call 800.828.4526 29

fall '13
Roxanne
may just become your new BFF!

Kathy's Design Notes:

Our new Roxanne top combines fashion with fun. The added touches of paisley eyelet to the shoulders and pockets give just the right touch of flirty yet feminine look.

Black

paisley
eyelet
on pockets!

paisley eyelet detail
on shoulders



New Body Style
ROXANNE TOP
205-02

Black
XS-3X
Center Back Length Size S: 25 1/2"

Fashion solid top with keyhole neckline and contrast trim in tonal eyelet fabric at shoulder and pockets. 100% cotton. Imported.

other colors available

 Navy (12)

 Raspberry (73)



Pants are featured on pages 46-49

winter '13 **AVAILABLE 9/1/13**
'Tis the Season for
Holiday Style!



Elastic shirring!

BROOKE PLACEMENT TOP
174PLM-NOR

Nordic Vest
XS-XL
Center Back Length Size S: 26"

Lightweight, rounded neckline, welt pockets, koi engraved buttons. 100% cotton. Imported.

Coordinating Colors

 White (01)

 Black (02)

 Ruby (22)



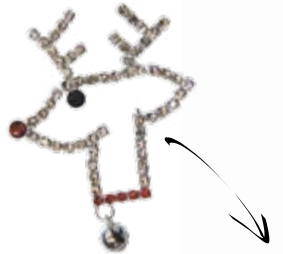
Pants are featured on pages 46-49

rhinestone detail!



Nordic
Vest

Santa's not the only one who looks
good in Red



Includes removable reindeer pin.
Stylish and festive for the holidays.



Ruby

OLIVIA JACKET
406-22
Ruby (Limited Edition)
XS—3X
Center Back Length Size S: 27 3/8"

Sleek, stylish jacket with round neck, button front and deep pockets. 55% cotton, 45% polyester soft twill. Imported.

Coordinating Colors



winter '13 AVAILABLE 9/1/13

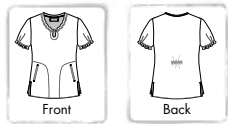
*If Rose by
any other name...*

Forbidden
Rose

BRIANNA TOP
190PR-FBR
Forbidden Rose
XS—3X
Center Back Length Size S: 26 3/4"

Lightweight top with jewel rhinestone button at neckline, two pockets, elastic back. 100% cotton. Imported.

Coordinating Colors



Color
the Holidays Happy!

Wonderland







KATHRYN TOP

115PR-WON
Wonderland
XS-3X
Center Back Length Size S: 25"

Mock wrap top with adjustable front ties, flattering for all shapes and sizes. 100% cotton. Imported.

Coordinating Colors

-  Black (02)
-  Merlot (48)
-  Turquoise (59)
-  Raspberry (73)



Pants are featured on pages 46-49

winter '13 **AVAILABLE 9/1/13**
*Be festive &
fashionable
this Holiday Season!*

Nordic
Flower





New Body Style

CAMILLE TOP

215PR-NOF
Nordic Flower
XS-3X
Center Back Length Size S: 26 3/4"

Flattering Henley neck top with welt pockets and solid contrast fabric on neckline, sleeves and pockets. 100% cotton. Imported.

Coordinating Colors

-  Black (02)
-  Amethyst (51)
-  Turquoise (59)



Pants are featured on pages 46-49

winter '13 AVAILABLE 9/1/13



What is tokidoki? tokidoki is the vision of designer Simone Legno and his partners Pooneh Mohajer and Ivan Arnold. The brand has built a worldwide following with its larger-than-life characters and designs, as well as its high-profile collaborations with Karl Lagerfeld, LeSportsac, Hello Kitty, Marvel and others.



BRIANNA PLACEMENT TOP
190PLM-TKX
tokidoki Xmas
XS—XL
Center Back Length Size S: 26 3/4"

Lightweight top with flower button at neckline, two pockets, elastic back. 100% cotton. Imported.

- Coordinating Colors
- White (01)
 - Black (02)
 - Ruby (22)



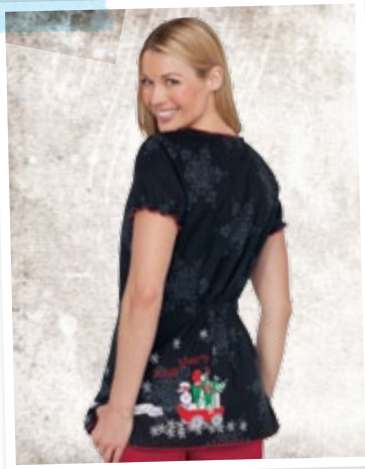
tokidoki
Xmas



Pants are featured on pages 46-49

winter '13 AVAILABLE 9/1/13

The holidays will have you
Coming and Going



BRIANNA PLACEMENT TOP
190PLM-PKA
Park Ave
XS—XL
Center Back Length Size S: 26 3/4"

Lightweight top with jewel rhinestone button at neckline, two pockets, elastic back. 100% cotton. Imported.

- Coordinating Colors
- White (01)
 - Black (02)
 - Ruby (22)



Rhinestone Detail!



Park Ave

koi™ SOLIDS...



Turquoise



Merlot



Limeade



Galaxy



Espresso



Camel



Flamingo



Turquoise



Olive



Hunter



Ruby



Black



Amethyst



Ice Blue



Ceil



Caribbean Blue



White



Steel



Sunset



Raspberry



Sugar Plum



Stone



Navy



Pink



Royal Blue

...you can never have too many colors!



"I love your designs for solid tops. I got one and they are awesome"

—Christine M., Washington D.C.



AVAILABLE IN
NAVY AND WHITE!

Rosie
Embroidery
Navy

CHRISTINA NOVELTY TOP 207ROS-12

Rosie Embroidery Navy
XS—3X
Center Back Length Size S: 25 1/4"

Sporty yet feminine top with Henley neckline, patch pockets, shaping at waist. 100% cotton. Imported.

Coordinating Colors



Front



Back

fall '13 FASHION SOLIDS
*Good Things are
worth Repeating.*

*Our fabulous, wildly popular
embroidered solids are back in stock!*

CHRISTINA NOVELTY TOP 207ROS-01

Rosie Embroidery White
XS—3X
Center Back Length Size S: 25 1/4"

Sporty yet feminine top with Henley neckline, patch pockets, shaping at waist. 100% cotton. Imported.

Coordinating Colors



Front



Back

Rosie
Embroidery
White

Our New Fashion Top, *Roxanne*.
Eyelet lace at the shoulders & pockets make it pretty. The fit makes it fabulous.



paisley eyelet on shoulders



Navy



Black

fall '13 FASHION SOLIDS

Our Fabulous New Top in a Fresh Color for Fall... *Raspberry!*
With details like eyelet laced trim at the shoulders and a flattering keyhole neckline, you'll want one in every color!

- Fashion solid top
- Keyhole neckline
- Contrast trim in tonal eyelet fabric at shoulders and pockets
- Double patch pockets
- 100% cotton
- Imported

**New Body Style
ROXANNE TOP**

205

XS—3X

Center Back Length Size S: 25 1/2"



Front



Back



Black
205-02



Navy
205-12



Raspberry
205-73

paisley eyelet on pockets too!



Raspberry



Merlot



Pants are featured on pages 46-49

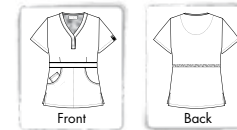
fall '13 REORDERABLES

Justine—the classic top *designed by our customers*
You requested it, we created it

- ✿ Easy-to-wear pullover style
- ✿ Longer length for better coverage
- ✿ Ultra comfortable neckline
- ✿ Deep front pockets with cell phone mini pocket on right
- ✿ Elastic back waist for fit
- ✿ 55% cotton, 45% polyester soft twill
- ✿ Imported

JUSTINE TOP
175

XS-3X
 Center Back Length Size S: 27"



*White long-sleeve top not included.
 For display only.



Ruby

Pants are featured on pages 46-49

fall '13 REORDERABLES

Our all time *best selling pants*
The one and only original Lindsey pants

- ✿ Easy fit low-rise pants
- ✿ Amazing comfort and durability
- ✿ Adjustable drawstring waist
- ✿ Adjustable hem at ankle
- ✿ 55% cotton, 45% polyester soft twill
- ✿ Imported

LINDSEY PANTS

701

Regular (701)
XS-3X (31" inseam)

Petite (701P)
XS-3X (29" inseam)

Tall (701T)
XS-XL (33" inseam)

Extra Petite (701XP)
XXS-XL (27" inseam)
Black, Navy and Steel only

Black, Navy and Steel also available
in 4X and 5X (Regular inseam only)

White, Black, Navy and Steel also available
in XXS (Regular and Petite inseams)



Raspberry

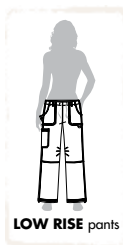


Camel

Pink

Galaxy

Colorful facing!





koi enamel
heart zipper



LOW RISE pants

Pink



White
709-01



Ruby
709-22



Black
709-02



Steel
709-24



Navy
709-12



Espresso
709-52



Pink
709-16



Ice Blue
709-56



Royal Blue
709-20



Flamingo
709-58

fall '13 REORDERABLES

You've met Lindsey... *have you met Sara?*
Say hello to our flat-front pant that's flattering for all

- Made with the same comfortable fabric as our Lindsey pants
- Flat front and flared legs for a flattering look
- Elastic-back waist and side zipper entry
- Plenty of pockets for all your gear
- 55% cotton, 45% polyester soft twill
- Imported

SARA PANTS

709

Regular (709)
XS-3X (31" inseam)

Petite (709P)
XS-3X (29" inseam)

Tall (709T)
XS-XL (33" inseam)



Front



Back



stylized snap
button

heart rivets



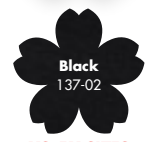
Steel



"I receive nothing but wonderful compliments every time I wear my koi scrubs. I absolutely adore koi and will always purchase them!"
-Danielle B., Fresno, CA



Ruby



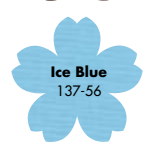
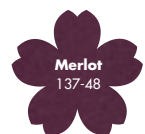
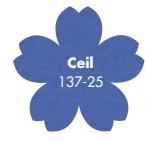
XS-5X SIZES



XS-5X SIZES



XS-5X SIZES



Contrast Stitching



New Color!



Available August 2013

Pants are featured on pages 46-49

fall '13 REORDERABLES

Our #1 *selling top*

Katelyn—because some things never go out of style

- Easy fit pullover styling
- Adjustable side tie at waist
- Two deep patch pockets in front
- 55% cotton, 45% polyester soft twill
- Imported

KATELYN TOP

137

XS-3X

Black, Navy, and Steel available in XS-5X
Center Back Length Size S: 25"



Front



Back



Turquoise



K "I absolutely LOVE koi scrubs! Everything about koi scrubs is wonderful from the cut, fabric and colors!"
 -Anesa K., Pflugerville, TX



Ice Blue

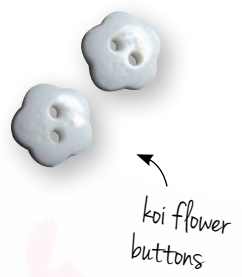
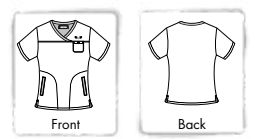


- | | |
|--|---|
| Black 113HRT-02 Flamingo Trim | Ceil 113HRT-25 Navy Trim |
| Navy 113HRT-12 Ceil Trim | Ice Blue 113HRT-56 Navy Trim |
| Pink 113HRT-16 Steel Trim | Flamingo 113HRT-58 Black Trim |
| Ruby 113HRT-22 Steel Trim | Turquoise 113HRT-59 Navy Trim |
| Steel 113HRT-24 Pink Trim | Sugar Plum 113HRT-72 Amethyst Trim |

fall '13 **REORDERABLES**
Sport styled *Ashley*
Because some days work feels like a marathon

- Easy fitting pullover styling
- Sporty crossover v-neck
- Novelty stripe trim
- 55% cotton, 45% polyester soft twill
- Imported

ASHLEY TOP
113HRT
 XS-3X
 Center Back Length Size S: 24 3/4"



Navy

The clean, sleek and *stylish Olivia jacket*

Wear it as a lab coat or a warm-up jacket

- Round neck with button front
- Deep pockets, including one for your cell phone
- D-ring for your keys
- 55% cotton, 45% polyester soft twill
- Imported

OLIVIA JACKET

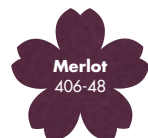
406

XS-3X

Center Back Length Size S: 27 3/8"



Royal
Blue



Pants are featured on pages 46-49

fall '13 REORDERABLES

Knit tees with a *flair for fashion*

Our ultra comfy Carrie tee



Heather
Gray

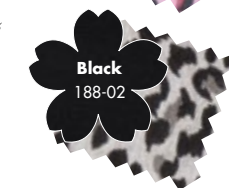
- Sweetheart Henley neck with two buttons
- Mini chest pocket
- Butterfly applique back neck facing
- Contrast fold-over cuff with cheetah print in coordinating colors
- 100% cotton jersey
- Imported

CARRIE TEE

188

XS-3X

Center Back Length Size S: 27"



fold-over cuffs

Pants are featured on pages 46-49

Rebecca, a lab coat you can *fall in love with*

Great tailored fit and the koi details you love

- ❁ Pointed shirt collar
- ❁ Four patch pockets
- ❁ Beautiful facing on back of neck and interior cuffs
- ❁ 55% cotton, 45% polyester soft twill
- ❁ Imported

REBECCA LAB COAT
419
 XS-3X
 Center Back Length Size S: 34 1/8"



pretty cuff
interface lining

White

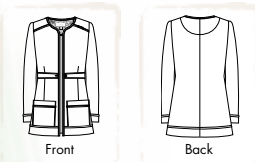
Pants are featured on pages 46-49

Lauren, Our *New Ultra Stylish* Lab Coat

Designed to look and feel amazing

- ❁ Stylized binding to highlight design details
- ❁ Convenient shoulder loop for your ID badge
- ❁ Two patch pockets
- ❁ 60% cotton, 40% polyester twill
- ❁ Imported

New Body Style
LAUREN LAB COAT
421
 XS-3X
 Center Back Length Size S: 31 5/8"



see more I.D.
badges on pg. 75

White



shoulder loop
for I.D. badge

Pants are featured on pages 46-49

We took your input and made a *great men's top*
Our popular Jason top

- Basic top with amazing fit
- Henley neck with zigzag stitching placket
- Side slits
- Chest pocket with pen slot, sleeve pocket and two slanted welt pockets
- 55% cotton, 45% polyester soft twill
- Imported

JASON TOP
654
S-3X
Center Back Length Size L: 29 3/8"



Royal Blue

Black
654-02

Navy
654-12

Royal Blue
654-20

Steel
654-24

Espresso
654-52

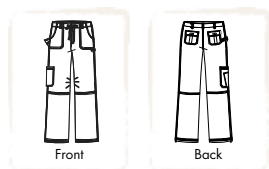


fall '13 REORDERABLES
Incredible fit, *incredible comfort*
Our best-selling James pants for men

- Incredible comfort, fit and durability
- Zip-fly drawstring pants
- Deep pockets and adjustable hem
- Elastic waist and silicone piping to keep shirts tucked in
- Regular and tall lengths
- 55% cotton, 45% polyester soft twill
- Imported

JAMES PANTS
601
Regular (601)
S-3X (32" inseam)

Tall (601T)
S-3X (34" inseam)



Royal Blue

Steel

Espresso



Steel

Black
601-02

Navy
601-12

Royal Blue
601-20

Steel
601-24

Espresso
601-52

EckoRed

SINCE 1972

ECKO SCRUBS

always stylish
NEVER BORING

Ecko scrubs are fun, fashionable and 180° from boring. With contemporary styling, awesome colors (like our new pewter) and amazing fit, they're a refreshing change from your typical scrubs. Ecko. The Cure for Ordinary Scrubs.



EckoUnltd.

SINCE 1972

FALL/WINTER 2013



MAKE A FASHION STATEMENT



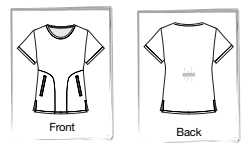
New Body!
RHONDI TOP
Pattern: Bling
ER2117-BLG
XS-XL
Center Back Length Size S: 26"

Lightweight, rounded neckline, welt pockets, placement print. 100% cotton. Imported.

Coordinating Colors:

Lilac Pewter

new color!



NICKI TOP
Pattern: Lyrical
ER2113-LYR
XS-3X
Center Back Length Size S: 26 1/2"

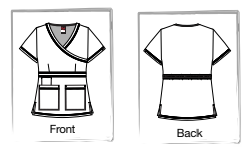
Mock wrap top, bust darts, patch pockets, cell phone pocket, side slits. 60% cotton, 40% polyester soft twill. Imported.

Coordinating Colors:

White Black

Pewter

new color!



NICKI TOP
Pattern: Edgemont Rose
ER2113-EGR
XS-3X
Center Back Length Size S: 26 1/2"

Mock wrap top, bust darts, patch pockets, cell phone pocket, side slits. 60% cotton, 40% polyester soft twill. Imported.

Coordinating Colors:

Lilac Pewter

new color!



SATISFY YOUR DAILY MINIMUM REQUIREMENT FOR STYLE

Our simple yet sporty Nicki top

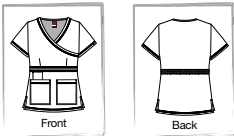


- ✓ Mock wrap neckline
- ✓ Bust darts for a clean front
- ✓ Two patch pockets, invisible cell phone pocket
- ✓ Side slits and elastic back waist
- ✓ 60% cotton, 40% polyester soft poplin
- ✓ Imported

New Color!
Pewter

NICKI

XS-3X
Center Back Length Size S: 26 1/2"



- | | |
|--------------------|-----------------------------------|
| White ER2113-01 | Ceil ER2113-42 |
| Black ER2113-02 | Cerise ER2113-43 |
| Navy ER2113-12 | Lilac ER2113-55 |
| | new color! Pewter ER2113-70 |

STYLE MEETS COMFORT

Slip into our stylish Tiffany pants

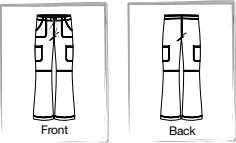
- ✓ Ultra stylish flared leg pants
- ✓ Drawstring elastic waist
- ✓ Two front hip pockets
- ✓ Two rounded cargo pockets
- ✓ 60% cotton, 40% polyester soft poplin
- ✓ Imported

TIFFANY

Regular (ER2704)
XS-3X (31" inseam)

Petite (ER2704P)
XS-3X (29" inseam)

Tall (ER2704T)
XS-XL (33" inseam)



Pewter not available in Tall.

- | | |
|--------------------|-----------------------------------|
| White ER2704-01 | Cerise ER2704-43 |
| Black ER2704-02 | Lilac ER2704-55 |
| Navy ER2704-12 | new color! Pewter ER2704-70 |
| Ceil ER2704-42 | |



Cerise



LENA- ULTRA STYLISH, ULTRA PROFESSIONAL

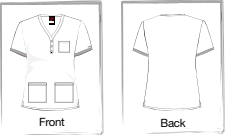
Our basic top with a smart sense of style



- ✓ Henley neckline with three buttons
- ✓ One chest pocket, two patch pockets
- ✓ Rib trim on sleeves and top of pockets
- ✓ Side slits
- ✓ 60% cotton, 40% polyester poplin
- ✓ Imported

LENA

XS-3X
Center Back Length Size S: 25 1/2"



- Black**
ER2115-02
- Ceil**
ER2115-42
- Navy**
ER2115-12
- Lilac**
ER2115-55



side slits

COMFORT YOU CAN WEAR ALL DAY LONG

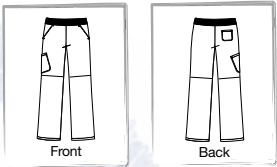
Our ultra comfortable Keira pants

- ✓ Slim-fit, rib-waist pants
- ✓ Clean front with two slash pockets
- ✓ Side cargo pocket and back pocket
- ✓ Straight-leg fit
- ✓ 60% cotton, 40% polyester soft poplin
- ✓ Imported

KEIRA

Regular (ER2705)
XS-3X (31" inseam)

Available in regular lengths only.



- Black**
ER2705-02
- Ceil**
ER2705-42
- Navy**
ER2705-12
- Lilac**
ER2705-55



SO SOFT, SO COMFY, SO WONDERFUL

Our long sleeve thermal knit Liv tees



White

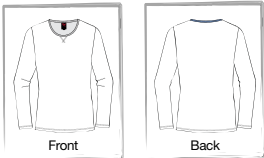
- ✓ Long sleeve thermal knit tee
- ✓ Ultra comfortable
- ✓ Ribbing at neck
- ✓ Cover stitching all over
- ✓ Elbow darts for added shaping
- ✓ 60% cotton, 40% polyester waffle thermal
- ✓ Imported



elbow darts

LIV

XS-3X
Center Back Length Size S: 26 3/4"



THE ULTIMATE WARM-UP JACKET

You'll love our stylish Bedford jacket

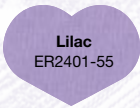
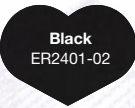
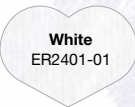
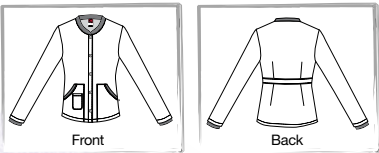
- ✓ Ultra stylish rib-trim warm-up jacket
- ✓ Ribbing at neck, cuffs and pockets
- ✓ Button front
- ✓ Two deep pockets and one cell phone pocket
- ✓ 60% cotton, 40% polyester soft poplin
- ✓ Imported



White

BEDFORD

XS-3X
Center Back Length Size S: 27 3/4"



COMFORT NEVER LOOKED SO GOOD

Our popular Harrison pants for men

- ✓ Zip-fly scrub pants
- ✓ Drawstring waist
- ✓ Straight leg fit
- ✓ Two side pockets
- ✓ Two back pockets with Velcro closures
- ✓ 60% cotton, 40% polyester soft poplin
- ✓ Imported



HARRISON

Regular (EU2600)
S-3X (32" inseam)

Tall (EU2600T)
S-3X (34" inseam)

Pewter not available in Tall

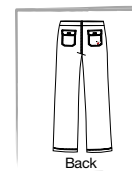
Black
EU2600-02

Navy
EU2600-12

Ceil
EU2600-42

New Color!

Pewter
EU2600-70



CLEAN, SIMPLE, CLASSIC

Our basic Riverside top for men

- ✓ V-neck top
- ✓ Chest pocket with embroidered rhino logo
- ✓ Pen/badge loop
- ✓ Two side seam pockets
- ✓ 60% cotton, 40% polyester soft poplin
- ✓ Imported

RIVERSIDE

S-3X

Center Back Length Size L: 28 1/2"



Black
EU2650-02

Navy
EU2650-12

Ceil
EU2650-42

New Color!

Pewter
EU2650-70



Ceil



Ceil

JOSH- OUR VERSATILE THERMAL-KNIT TEE FOR MEN

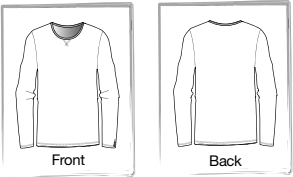
Looks great under a scrub top or on its own



- ✓ Long-sleeve thermal knit tee
- ✓ Ultra comfortable
- ✓ Ribbing at neck
- ✓ Cover stitching all over
- ✓ Elbow darts for added shaping
- ✓ 60% cotton, 40% polyester waffle thermal
- ✓ Imported

JOSH

S-3X
Center Back Length Size L: 30 3/4"



- Black
EU2657-02
- Navy
EU2657-12
- Ceil
EU2657-42

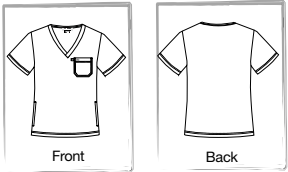
A FRESH TAKE ON A CLASSIC TOP

Our stylish Riverside top with camo print

- ✓ V-neck top with camo print
- ✓ Chest pocket with embroidered rhino logo
- ✓ Pen/badge loop
- ✓ Two side seam pockets
- ✓ 60% cotton, 40% polyester soft poplin
- ✓ Imported

RIVERSIDE

S-3X
Center Back Length Size L: 28 1/2"



- Camo Black
EU2650-CMB
Coordinating Color: Black
- Camo Navy
EU2650-CMN
Coordinating Color: Navy



Camo Navy





koi style and comfort,
now available in shoes.

koi™ by Sanita®
THE ORIGINAL DANISH CLOGS
since 1907

Look fashionable from head to toe with our exclusive koi by Sanita clogs. Available in a wide selection of styles, they go great with your koi outfits and you'll love how comfortable they feel even after a long shift! To see the entire collection and to locate your nearest koi by Sanita retailer, visit www.sanitaclogs.com today!

To Purchase Shoes: Contact your Sanita representative for more info at 866-726-4822 or email: sales@sanitaclogs.com.



ISLAND ESPRESSO-73450608



LINDSEY LEOPARD-73450609



LINDSEY SNAKE-73450610



FROLIC-73450676



OSLO-73450686



SHEILA-73450611



LINDSEY-STEEL-73450608



LINDSEY-BLACK-73450608



LINDSEY-WHITE-73450608

WILD SIDE-73450696

fall '13 ACCESSORIES



Beautiful
A101-URB



Cactus
A100-TDCT



Monkey
A100-TDMK



LOVE
A101-LOV



Donutella
A100-TDDT



Best Friend
A101-FRN



Gotcha Covered
A101-GHC

New fun and fashionable
I.D. Badge Reels
from koi & tokidoki!

Complete your koi look with these fabulous retractable ID badge reels. They're a great way to display your ID badge with stylish flair! Imported.



RN Royalty
A101-RN



Purrfect
A101-PRF



Happy Doses
A101-HBD



Hugs for Free
A101-HFF



Hope
A102PRM-CRC

koi™ cares
COURAGE
COLLECTION

\$1 from the sale of each Hope badge reel will benefit The Breast Cancer Research Foundation®.



| | | WOMEN'S PANTS | | WOMEN'S TOPS | | | |
|------|------------------------------|---|---|---|---|---|--|
| | |  |  |  |  |  |  |
| | | Lindsey Pant XS-3X XS-3X P XS-XL T | Sara Pant XS-3X XS-3X P XS-XL T | Ashley Top XS-3X | Katelyn Top XS-3X | Justine Top XS-3X | Olivia Jacket XS-3X |
| CODE | | 701 | 709 | 113 | 137 | 175 | 406 |
| 01 | White | * | * | | * | * | * |
| 02 | Black | * | * | * | * | * | * |
| 07 | Camel | * | | | | * | |
| 12 | Navy | * | * | * | * | * | * |
| 16 | Pink | * | * | * | * | | |
| 20 | Royal Blue | * | * | * | * | * | * |
| 22 | Ruby | * | * | * | * | * | * |
| 24 | Steel | * | * | * | * | * | * |
| 25 | Ceil | * | * | * | * | * | * |
| 33 | Hunter | * | | | * | | |
| 36 | Stone | * | | | | | |
| 38 | Caribbean Blue | * | | | * | * | |
| 48 | Merlot | * | | | * | * | * |
| 51 | Amethyst | * | | | * | * | * |
| 52 | Espresso | * | * | | * | | |
| 56 | Ice Blue | * | * | * | * | * | * |
| 57 | Olive | * | | | * | | |
| 58 | Flamingo | * | * | * | * | * | * |
| 59 | Turquoise | * | | * | * | * | * |
| 60 | Galaxy | * | | | * | * | * |
| 66 | Limeade | * | | | | | |
| 71 | Sunset | * | | | | | |
| 72 | Sugar Plum | * | | * | * | | |
| 73 | Raspberry <small>NEW</small> | * | | | * | | |

NOTE: XXS, 4X and 5X sizes and extra petite (XP) inseam lengths are available in certain styles and colors. * Available **Now** * Available **July 2013** * Available **August 2013**

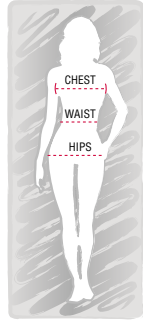


| | | MEN'S | |
|------|------------------------------|---|---|
| | |  |  |
| | | Jason Top S-3X | James Pant S-3X S-3X S S-3X T |
| CODE | | 654 | 601 |
| 01 | White | | |
| 02 | Black | * | * |
| 07 | Camel | | |
| 12 | Navy | * | * |
| 16 | Pink | | |
| 20 | Royal Blue | * | * |
| 22 | Ruby | | |
| 24 | Steel | * | * |
| 25 | Ceil | | |
| 33 | Hunter | | |
| 36 | Stone | | |
| 38 | Caribbean Blue | | |
| 48 | Merlot | | |
| 51 | Amethyst | | |
| 52 | Espresso | * | * |
| 56 | Ice Blue | | |
| 57 | Olive | | |
| 58 | Flamingo | | |
| 59 | Turquoise | | |
| 60 | Galaxy | | |
| 66 | Limeade | | |
| 71 | Sunset | | |
| 72 | Sugar Plum | | |
| 73 | Raspberry <small>NEW</small> | | |

| REORDERABLES STITCHING GUIDE | | |
|------------------------------|------------|-----------------|
| Pants Color | Color Code | Stitching Color |
| White | 01 | SELF |
| Black | 02 | SELF |
| Camel | 07 | KHAKI |
| Navy | 12 | SELF |
| Pink | 16 | SELF |
| Royal Blue | 20 | SELF |
| Ruby | 22 | SELF |
| Steel | 24 | SELF |
| Ceil | 25 | SELF |
| Hunter | 33 | SELF |
| Stone | 36 | LIGHT BEIGE |
| Caribbean Blue | 38 | SELF |
| Merlot | 48 | SELF |
| Amethyst | 51 | SELF |
| Espresso | 52 | SELF |
| Ice Blue | 56 | SELF |
| Olive | 57 | SELF |
| Flamingo | 58 | SELF |
| Turquoise | 59 | GRAY |
| Galaxy | 60 | SELF |
| Limeade | 66 | SELF |
| Sunset | 71 | SELF |
| Sugar Plum | 72 | SELF |
| Raspberry | 73 | SELF |

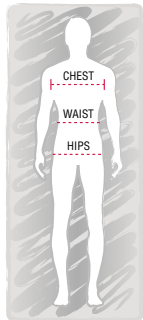
| Top Color | Color Code | Stitching Color |
|----------------|------------|-----------------|
| White | 01 | SELF |
| Black | 02 | SELF |
| Camel | 07 | KHAKI |
| Navy | 12 | SELF |
| Pink | 16 | SELF |
| Royal Blue | 20 | SELF |
| Ruby | 22 | SELF |
| Steel | 24 | SELF |
| Ceil | 25 | SELF |
| Hunter | 33 | SELF |
| Caribbean Blue | 38 | SELF |
| Merlot | 48 | SELF |
| Amethyst | 51 | SELF |
| Espresso | 52 | SELF |
| Ice Blue | 56 | SELF |
| Olive | 57 | SELF |
| Flamingo | 58 | SELF |
| Turquoise | 59 | GRAY |
| Galaxy | 60 | SELF |
| Limeade | 66 | SELF |
| Sunset | 71 | SELF |
| Sugar Plum | 72 | SELF |
| Raspberry | 73 | SELF |

* Except Justine top in Turquoise, which has Self stitching.



| ECKO WOMEN'S SCRUB SIZE CHART | | | | | | | |
|-------------------------------|-------|-------|-------|-------|-------|-------|-------|
| Size Range | XS | S | M | L | XL | 2X | 3X |
| Size Comparison | 0-2 | 4-6 | 8-10 | 12-14 | 16-18 | 20-22 | 24-26 |
| Chest | 33-35 | 35-37 | 37-39 | 39-41 | 43-45 | 46-48 | 49-52 |
| Waist | 25-27 | 27-29 | 29-31 | 31-33 | 34-36 | 38-40 | 41-44 |
| Hips | 34-36 | 36-38 | 39-41 | 42-44 | 45-47 | 48-50 | 51-53 |
| Inseam-approximately | 31 | 31 | 31 | 31 | 31 | 31 | 31 |
| Petite Inseam-approximately | 29 | 29 | 29 | 29 | 29 | 29 | 29 |
| Tall Inseam-approximately | 33 | 33 | 33 | 33 | 33 | N/A | N/A |

*To select the appropriate pants size, please refer to the hip measurement on the chart.



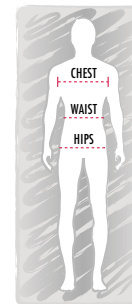
| ECKO MEN'S SCRUB SIZE CHART | | | | | | |
|-----------------------------|-------|-------|-------|-------|-------|-------|
| Size Range | S | M | L | XL | 2X | 3X |
| Chest | 34-36 | 38-40 | 42-44 | 46-48 | 50-52 | 54-56 |
| Waist | 28-30 | 30-32 | 34-36 | 38-40 | 40-42 | 44-46 |
| Inseam-approximately | 32 | 32 | 32 | 32 | 32 | 32 |
| Tall Inseam-approximately | 34 | 34 | 34 | 34 | 34 | 34 |

*To select the appropriate pants size, please refer to the waist measurement on the chart.



| WOMEN'S SCRUB SIZE CHART | | | | | | | | | | |
|-----------------------------|-------|-------|-------|-------|-------|-------|-------|-------|-------|-------|
| Size Range | XXS | XS | S | M | L | XL | 2X | 3X | 4X | 5X |
| Size Comparison | 00-0 | 0-2 | 4-6 | 8-10 | 12-14 | 16-18 | 20-22 | 24-26 | 26-28 | 30-32 |
| Chest | 30-32 | 33-35 | 35-37 | 37-39 | 39-41 | 43-45 | 46-48 | 49-52 | 53-56 | 57-60 |
| Waist | 22-24 | 25-27 | 27-29 | 29-31 | 31-33 | 34-36 | 38-40 | 41-44 | 45-48 | 49-52 |
| Hips | 32-34 | 34-36 | 36-38 | 39-41 | 42-44 | 45-47 | 48-50 | 51-53 | 54-57 | 58-61 |
| Inseam-approximately | 31 | 31 | 31 | 31 | 31 | 31 | 31 | 31 | 31 | 31 |
| Extra Petite Inseam-approx. | 27 | 27 | 27 | 27 | 27 | 27 | N/A | N/A | N/A | N/A |
| Petite Inseam-approx. | 29 | 29 | 29 | 29 | 29 | 29 | 29 | 29 | N/A | N/A |
| Tall Inseam-approx. | N/A | 33 | 33 | 33 | 33 | 33 | N/A | N/A | N/A | N/A |

*To select the appropriate pants size, please refer to the hip measurement on the chart.



| MEN'S SCRUB SIZE CHART | | | | | | |
|------------------------|-------|-------|-------|-------|-------|-------|
| Size Range | S | M | L | XL | 2X | 3X |
| Chest | 34-36 | 38-40 | 42-44 | 46-48 | 50-52 | 54-56 |
| Waist | 28-30 | 30-32 | 34-36 | 38-40 | 40-42 | 44-46 |
| Inseam-approx. | 32 | 32 | 32 | 32 | 32 | 32 |
| Short Inseam-approx. | 30 | 30 | 30 | 30 | 30 | 30 |
| Tall Inseam-approx. | 34 | 34 | 34 | 34 | 34 | 34 |

*To select the appropriate pants size, please refer to the waist measurement on the chart.

| | | WOMEN'S TOPS | | | | PANTS | | MEN'S TOPS | | PANTS |
|------|------------|--------------|--------|--------|--------|--------|--------|------------|--------|--------|
| | | | | | | | | | | |
| CODE | | ER2113 | ER2114 | ER2115 | ER2401 | ER2704 | ER2705 | EU2650 | EU2657 | EU2600 |
| 01 | White | ♥ | ♥ | | ♥ | ♥ | | | | |
| 02 | Black | ♥ | ♥ | ♥ | ♥ | ♥ | ♥ | ☞ | ☞ | ☞ |
| 12 | Navy | ♥ | ♥ | ♥ | ♥ | ♥ | ♥ | ☞ | ☞ | ☞ |
| 42 | Ceil | ♥ | ♥ | ♥ | ♥ | ♥ | ♥ | ☞ | ☞ | ☞ |
| 43 | Cerise | ♥ | | | | ♥ | | | | |
| 55 | Lilac | ♥ | | ♥ | ♥ | ♥ | ♥ | | | |
| 70 | Pewter | ♥ | | | | ♥ | | ☞ | | ☞ |
| CMB | Camo Black | | | | | | | ☞ | | |
| CMN | Camo Navy | | | | | | | ☞ | | |

Koi Happiness Guarantee

We take pride in the design and quality of every garment that carries the koi label. We use only the highest quality fabrics and materials in the construction of our clothing.

We pay close attention to the details. Compare our styling, comfort and quality to our competition. You'll find that we offer exceptional value and quality for the price.

We're passionate about the clothes we make. And we hope you feel the same way. Every garment we make is a labor of love.

We stand behind our products. If you're not 100% happy with any koi product, we'll replace it or give you a refund. We're not happy unless you're happy.

Questions or comments?

We would love to hear from you! Please contact us at:

koi™

1757 Stanford Street
Santa Monica, CA 90404

Tel: 800.828.4526
Tel: 310.828.0055
Fax: 310.828.0099

Email: info@koihappiness.com
Visit us at koihappiness.com



INDEX BY **STYLE NUMBER**

| WOMEN'S | | |
|--|---------------------|--------|
| 113 ASHLEY TOP Page | | |
| 113HRT-02 | Heart (Black) | 52 |
| 113HRT-12 | Heart (Navy) | 52, 53 |
| 113HRT-16 | Heart (Pink) | 52 |
| 113HRT-22 | Heart (Ruby) | 52 |
| 113HRT-24 | Heart (Steel) | 52 |
| 113HRT-25 | Heart (Ceil) | 52 |
| 113HRT-56 | Heart (Ice Blue) | 52 |
| 113HRT-58 | Heart (Flamingo) | 52 |
| 113HRT-59 | Heart (Turquoise) | 52 |
| 113HRT-72 | Heart (Sugar Plum) | 52 |
| 115 KATHRYN TOP Page | | |
| 115PR-BUG | Butterfly Gardens | 24 |
| 115PR-CHH | Cha Cha Cheetah | 10 |
| 115PR-INC | In Check | 6 |
| 115PR-KOL | koi Lucky | 22 |
| 115PR-MCC | Moroccan Tile | 27 |
| 115PR-NFL | Night Flight | 9 |
| 115PR-TWG | Twiggy | 16 |
| * 115PR-WON | Wonderland | 34 |
| 115R-WSB | Wildside Black | 23 |
| 115PRM-CP5 | Compassion | 18 |
| 129 BRIDGETTE TOP Page | | |
| 129PLM-ANG | Angelic | 4 |
| 129PR-AUR | Aura | 26 |
| 129PR-FPC | Flower Power — Cool | 17 |
| 137 KATELYN TOP Page | | |
| 137-01 | White | 50 |
| 137-02 | Black | 50 |
| 137-12 | Navy | 50 |
| 137-16 | Pink | 50 |
| 137-20 | Royal Blue | 50 |
| 137-22 | Ruby | 50 |
| 137-24 | Steel | 50 |
| 137-25 | Ceil | 50 |
| 137-33 | Hunter | 50 |
| 137-38 | Caribbean Blue | 50 |
| 137-48 | Merlot | 50 |
| 137-51 | Amethyst | 50 |
| 137-52 | Espresso | 50 |
| 137-56 | Ice Blue | 50 |
| 137-57 | Olive | 50 |
| 137-59 | Turquoise | 50, 51 |
| 137-60 | Galaxy | 50 |
| 137-72 | Sugar Plum | 50 |
| 137-73 | Raspberry | 50 |
| 149 BELLA TOP Page | | |
| 149PR-FRA | Francoise | 11 |
| 174 BROOKE TOP Page | | |
| * 174PLM-NOR | Nordic Vest | 31 |
| 175 JUSTINE TOP Page | | |
| 175-01 | White | 44 |
| 175-02 | Black | 44 |
| 175-07 | Camel | 44 |
| 175-12 | Navy | 44 |

| | | |
|--|------------------------|--------|
| 175 JUSTINE TOP (continued) Page | | |
| 175-20 | Royal Blue | 44 |
| 175-22 | Ruby | 44, 45 |
| 175-24 | Steel | 44 |
| 175-25 | Ceil | 44 |
| 175-38 | Caribbean Blue | 44 |
| 175-48 | Merlot | 44 |
| 175-51 | Amethyst | 44 |
| 175-56 | Ice Blue | 44 |
| 175-58 | Flamingo | 44 |
| 175-59 | Turquoise | 44 |
| 175-60 | Galaxy | 44 |
| 176 KOURTNEY TOP Page | | |
| 176PR-CNS | Carnaby Street | 8 |
| 188 CARRIE TOP Page | | |
| 188-01 | White | 55 |
| 188-02 | Black | 55 |
| 188-12 | Navy | 55 |
| 188-52 | Espresso | 55 |
| 188-67 | Heather Gray | 55 |
| 190 BRIANNA TOP Page | | |
| 190PLM-IBS | Itsy Bitsy Spider | 29 |
| 190PLM-PAF | Parisian Floral | 25 |
| * 190PLM-PKA | Park Ave | 37 |
| 190PLM-SHO | Sweet Home | 21 |
| * 190PLM-TKX | tokidoki Xmas | 36 |
| 190PLM-WBR | Warm Breeze | 22 |
| * 190PR-FBR | Forbidden Rose | 33 |
| 190PRM-CRG | Courage | 18 |
| 194 STELLA TOP Page | | |
| 194-12 | Navy | 20 |
| 196 DIANA TOP Page | | |
| 196PR-SPN | Spot On | 5 |
| 197 JULIA TOP Page | | |
| 197PR-SIG | Silver Garden | 12 |
| 202 AMELIA TOP Page | | |
| 202PR-MEM | Memoirs | 21 |
| 205 ROXANNE TOP Page | | |
| 205-02 | Black | 30, 40 |
| 205-12 | Navy | 13, 40 |
| 205-73 | Raspberry | 7, 43 |
| 207 CHRISTINA TOP Page | | |
| 207PR-CNY | Candy! Candy! | 28 |
| 207PR-WIR | Wired | 16 |
| 207ROS-01 | Rosie Embroidery White | 41 |
| 207ROS-12 | Rosie Embroidery Navy | 40 |
| 211 BETHANY TOP Page | | |
| * 211PLM-GMJ | Gems & Jewels | 15 |
| 215 CAMILLE TOP Page | | |
| * 215PR-NOF | Nordic Flower | 35 |
| 406 OLIVIA JACKET Page | | |
| 406-01 | White | 54 |
| 406-02 | Black | 54 |
| 406-12 | Navy | 54 |

| | | |
|--|------------------------|--------|
| 406 OLIVIA JACKET (continued) Page | | |
| 406-20 | Royal Blue | 54 |
| * 406-22 | Ruby (Limited Edition) | 32 |
| 406-24 | Steel | 54 |
| 406-48 | Merlot | 54 |
| 406-56 | Ice Blue | 54 |
| 406PRM-16 | Pink (Limited Edition) | 19 |
| 419 GABRIELLE SWEATER Page | | |
| 418PR-JAB | Jaguar — Black | 14 |
| 419 REBECCA LAB COAT Page | | |
| 419-01 | White | 57 |
| 421 LAUREN LAB COAT Page | | |
| 421-01 | White | 56 |
| 701 LINDSEY PANTS Page | | |
| 701-01 | White | 46 |
| 701-02 | Black | 46 |
| 701-07 | Camel | 46 |
| 701-12 | Navy | 46 |
| 701-16 | Pink | 46 |
| 701-20 | Royal Blue | 46 |
| 701-22 | Ruby | 46 |
| 701-24 | Steel | 46 |
| 701-25 | Ceil | 46 |
| 701-33 | Hunter | 46 |
| 701-36 | Stone | 46 |
| 701-38 | Caribbean Blue | 46 |
| 701-48 | Merlot | 46 |
| 701-51 | Amethyst | 46 |
| 701-52 | Espresso | 46 |
| 701-56 | Ice Blue | 46 |
| 701-57 | Olive | 46 |
| 701-58 | Flamingo | 46 |
| 701-59 | Turquoise | 46 |
| 701-60 | Galaxy | 46 |
| 701-66 | Limeade | 46 |
| 701-71 | Sunset | 46 |
| 701-72 | Sugar Plum | 46 |
| 701-73 | Raspberry | 46, 47 |
| 709 SARA PANTS Page | | |
| 709-01 | White | 48 |
| 709-02 | Black | 48 |
| 709-12 | Navy | 48 |
| 709-16 | Pink | 48 |
| 709-20 | Royal Blue | 48 |
| 709-22 | Ruby | 48 |
| 709-24 | Steel | 48 |
| 709-52 | Espresso | 48 |
| 709-56 | Ice Blue | 48, 49 |
| 709-58 | Flamingo | 48 |
| MEN'S | | |
| 601 JAMES PANTS Page | | |
| 601-02 | Black | 59 |
| 601-12 | Navy | 59 |
| 601-20 | Royal Blue | 59 |
| 601-24 | Steel | 59 |
| 601-52 | Espresso | 59 |

| | | |
|--|----------------|----|
| 654 JASON TOP Page | | |
| 654-02 | Black | 58 |
| 654-12 | Navy | 58 |
| 654-20 | Royal Blue | 58 |
| 654-24 | Steel | 58 |
| 654-52 | Espresso | 58 |
| ACCESSORIES | | |
| A100 tokidoki by koi ID BADGE REELS Page | | |
| A100-TDCT | Cactus | 75 |
| A100-TDDT | Donutella | 75 |
| A100-TDMK | Monkey | 75 |
| A101 koi ID BADGE REELS Page | | |
| A101-FRN | Best Friend | 75 |
| A101-GHC | Gotcha Covered | 75 |
| A101-HBD | Happy Doses | 75 |
| A101-HFF | Hugs for Free | 75 |
| A101-LOV | LOVE | 75 |
| A101-PRF | Purrfect | 75 |
| A101-RN | RN Royalty | 75 |
| A101-URB | Beautiful | 75 |
| A102 koi COURAGE ID BADGE REELS Page | | |
| A102PRM-CRC | Hope | 75 |

* = *winter 13* AVAILABLE 9/1/13



ECKO RED FOR WOMEN

| | | |
|--|---------------|----|
| ER2113 NICKI TOP Page | | |
| ER2113-01 | White | 64 |
| ER2113-02 | Black | 64 |
| ER2113-12 | Navy | 64 |
| ER2113-43 | Cerise | 64 |
| ER2113-55 | Lilac | 64 |
| ER2113-70 | Pewter | 64 |
| ER2113-EGR | Edgemont Rose | 63 |
| ER2113-LYR | Lyrical | 63 |
| ER2114 LIV TOP Page | | |
| ER2114-01 | White | 68 |
| ER2114-02 | Black | 68 |
| ER2114-12 | Navy | 68 |
| ER2114-42 | Ceil | 68 |
| ER2115 LENA TOP Page | | |
| ER2115-02 | Black | 66 |
| ER2115-12 | Navy | 66 |
| ER2115-42 | Ceil | 66 |
| ER2115-55 | Lilac | 66 |
| ER2117 RHONDI TOP Page | | |
| ER2117-BLG | Bling | 62 |

| | | |
|--|--------|----|
| ER2401 BEDFORD JACKET Page | | |
| ER2401-01 | White | 69 |
| ER2401-02 | Black | 69 |
| ER2401-12 | Navy | 69 |
| ER2401-42 | Ceil | 69 |
| ER2401-55 | Lilac | 69 |
| ER2704 TIFFANY PANTS Page | | |
| ER2704-01 | White | 65 |
| ER2704-02 | Black | 65 |
| ER2704-12 | Navy | 65 |
| ER2704-42 | Ceil | 65 |
| ER2704-43 | Cerise | 65 |
| ER2704-54 | Rose | 65 |
| ER2704-55 | Lilac | 65 |
| ER2704-61 | Wine | 65 |
| ER2704-70 | Pewter | 65 |
| ER2705 KEIRA PANTS Page | | |
| ER2705-02 | Black | 67 |
| ER2705-12 | Navy | 67 |
| ER2705-42 | Ceil | 67 |
| ER2705-55 | Lilac | 67 |

ECKO UNLTD. FOR MEN

| | | |
|--|------------|----|
| EU2600 HARRISON PANTS Page | | |
| EU2600-02 | Black | 70 |
| EU2600-12 | Navy | 70 |
| EU2600-42 | Ceil | 70 |
| EU2600-70 | Pewter | 70 |
| EU2650 RIVERSIDE TOP Page | | |
| EU2650-02 | Black | 71 |
| EU2650-12 | Navy | 71 |
| EU2650-42 | Ceil | 71 |
| EU2650-70 | Pewter | 71 |
| EU2650-CMB | Camo Black | 73 |
| EU2650-CMN | Camo Navy | 73 |
| EU2657 JOSH THERMAL TEE Page | | |
| EU2657-02 | Black | 72 |
| EU2657-12 | Navy | 72 |
| EU2657-42 | Ceil | 72 |



Where's Kai? Contest

Find Kai, our mascot, hidden in this catalog and you could win a koi scrub set!

Our mascot, Kai the koi fish, loves exploring, but he always seems to get himself lost. Can you help us find him? He's somewhere in this catalog... we just don't know exactly where.

If you find him, email us and let us know what page he's on and you'll be entered in a drawing to win a koi scrub set. No purchase necessary to enter or win.

Email your entry to shiningstar@koihappiness.com by **12/31/13** for your chance to win!

Please include your name, address, phone number, occupation and the page number where Kai is located. Write **Where's Kai?** in the subject line of your email.

Follow kai's adventures at www.koihappiness.com/kaiblog.

At koi, we have a simple mission:

CREATE SCRUBS THAT PEOPLE **LOVE** TO WEAR.

let koi improve your
Group Dynamics

From the fabrics we choose to the detail of our buttons, we take great care in making sure everything is just right. One area we're especially proud of is our group collection.

In each of our color groupings, you'll find flattering, well-fitting options for everyone in your group, regardless of size, shape or body type. So individually, and collectively, you'll always look your professional best.

**So check out our current group collections.
We think you'll find a lot to LOVE.**

It's all part of what we call koi group dynamics.



Katelyn top featured on page 50–51.
Sara pants featured on page 48–49.



Riverside top featured on page 71.
Harrison pants featured on page 70.



Nicki top featured on page 64.
Tiffany pants featured on page 65.



Female models:
Justine tops featured on page 44–45.
Lindsey pants featured on page 46–47.

Male model:
Jason top featured on page 58.
James pant featured on page 59.

koi[™] 1757 Stanford Street, Santa Monica, CA 90404

PRSR STD
U.S. POSTAGE
PAID
SANTA ANA, CA
PERMIT NO. 949

Must-haves for fall!

A delicious combination, Sugar Plum & Espresso!

KATHRYN TOP 115PR-BUG

Featured on page 24

wear it with Lindsey pants!
see more on pg 46-47

CUSTOMER SERVICE:
800.828.4526

FAX ORDERS:
310.828.0099

VISIT US AT
koihappiness.com

 [koikathypeterson](#)
Instagram

 /koistyle  /koistyle



♥ *Designed in Los Angeles with love*

© 2013 koi design LLC. All rights reserved. The koi by Kathy Peterson fish logo and The Home of Designer Scrubs are registered trademarks and koi, koihappiness, and the koi fish logo are trademarks of koi design LLC.